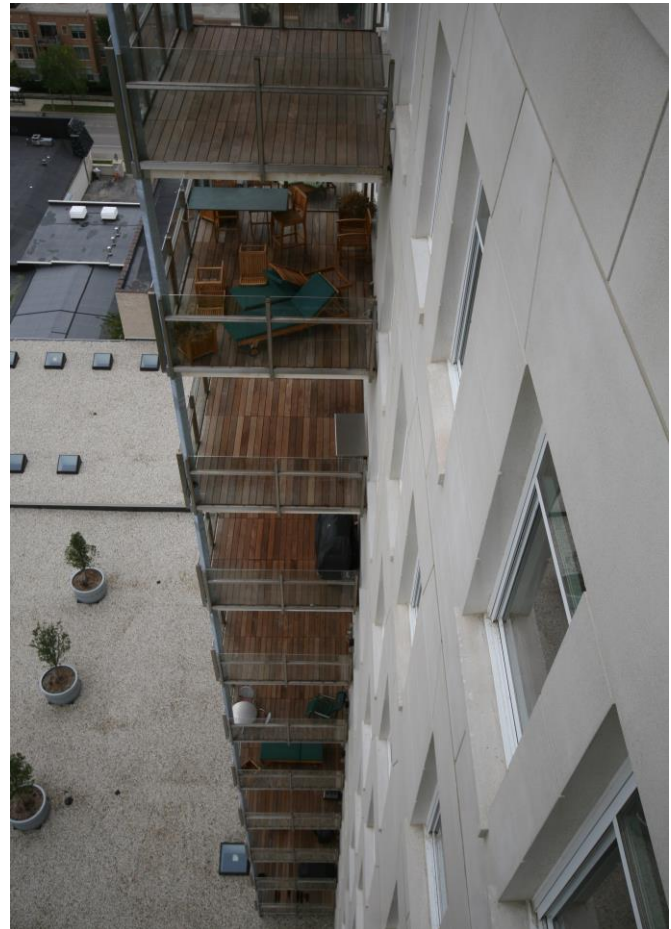


# TROPICAL

#001 1123

## BREAKWATER CONDOMINIUM

## PROJECT PROFILE



**TECHNICAL/ENVIRONMENTAL LEAD:** Brian Lotz

### **BREAKWATER CONDOMINIUM – MILWAUKEE, WI**

**specification:** Ipe  
**application:** Prefabricated Deck Panels  
**architect:** Peter Renner Architects  
**location:** Milwaukee, WI